

"Nexelec Config Tool" application Quick Start Guide



Installation of the application

The "Nexelec Config Tool" application is available on Android for devices equipped with the NFC function.



Nexelec Config Tool

NEXELEC R&D

Uninstall

Open

Reconfiguration procedure

NFC is a technology that allows the exchange of data between two equipped devices. This technology only works for devices that are very close to each other. This is why it is necessary to position the antenna of the phone as close as possible to the antenna of the product.

Product antenna location

Place the product in its standard position ("Do not paint" icon in the upper left corner).
The NFC antenna is located at the bottom left of the product.



Reading the product

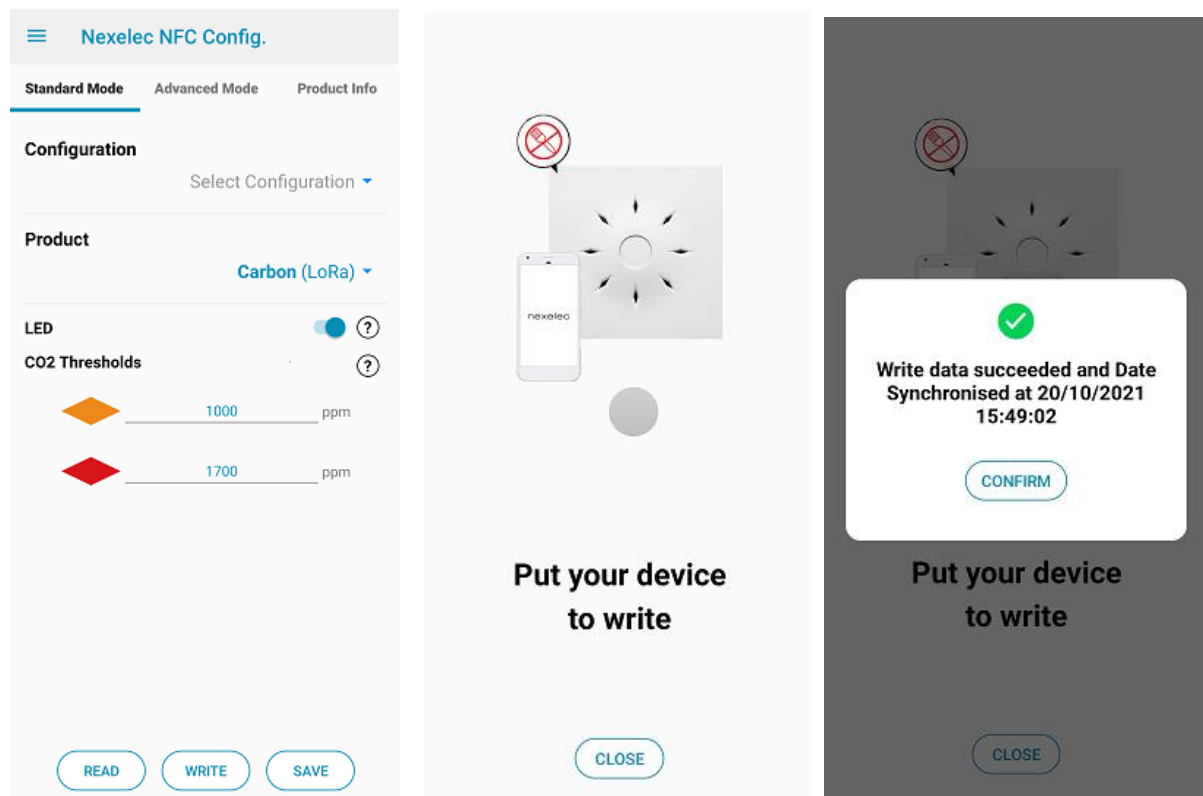
Place the phone against the product's NFC antenna (see previous paragraph).

The detection of the antenna is more or less obvious depending on the phone used.

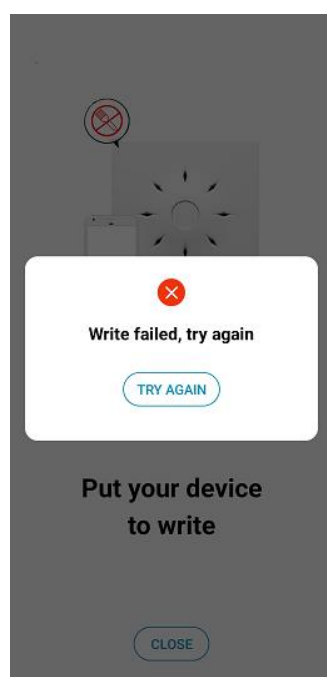
Tip: To check when the antennas are correctly positioned, use the circular icon that turns green when communication is established.

Changing the product configuration

Modify the product settings according to the desired configuration and select "Write". Place the phone against the product following the procedure described in the previous paragraph. A message will appear once the writing operation is complete. Do not remove the phone until the writing operation is complete.



In case of error at the time of writing (moving the phone for example), the following window appears.



Click on "Retry" and replace the phone correctly.
If you exit the application when the product has not been configured correctly, the product will revert to its initial configuration.

Advanced use

Save a configuration

Select "Save" and enter a configuration name.

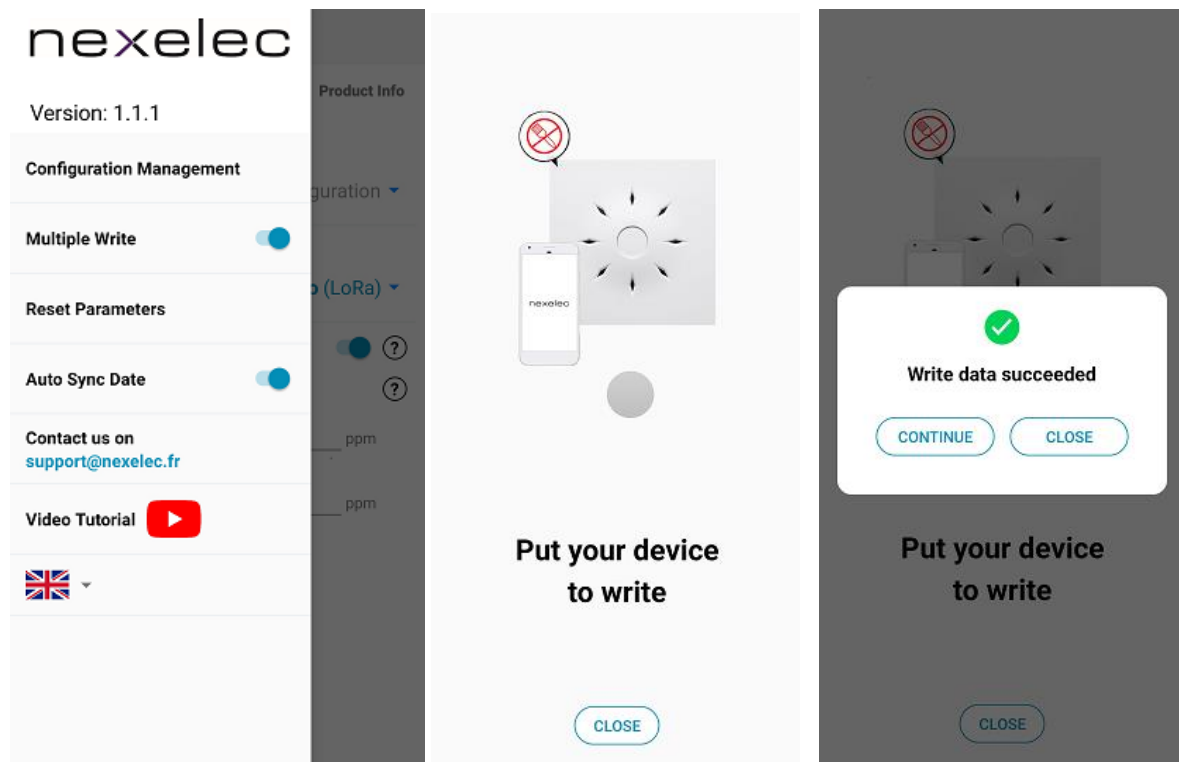
The saved configuration can then be loaded from the "Standard mode" tab.

The configuration can also be modified by going to the application settings and selecting "Configuration Management".

Configuration of a batch of products

The multiple write function allows you to reconfigure a set of products with the same configuration without having to return to the main window. After selecting "Write", the application will wait for a product. Once writing is complete, the application will automatically wait for another product until you press the "Close" button.

This function is available in the application settings.



Restarting the product after reconfiguration

By default, the product date is automatically synchronized with the phone date each time it is written, causing the product to restart.

The automatic date synchronization can be disabled in the application settings allowing a reconfiguration without restarting the product.

If you have any questions, please contact us by e-mail at: support@nexelec.fr